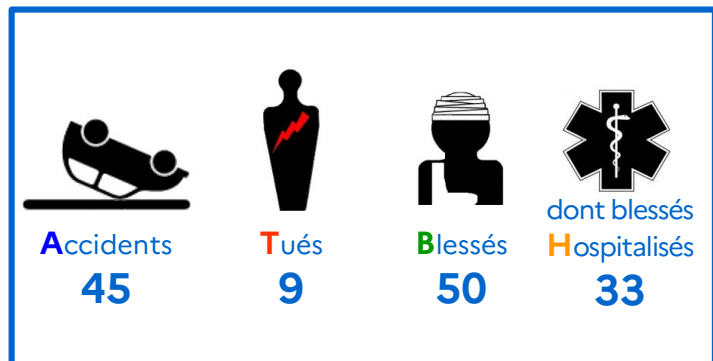


# Flash 23

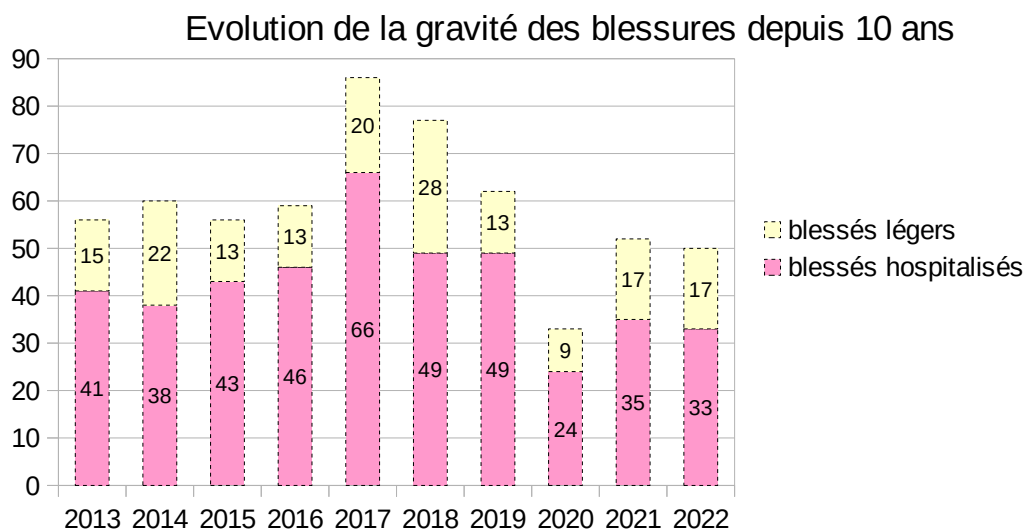
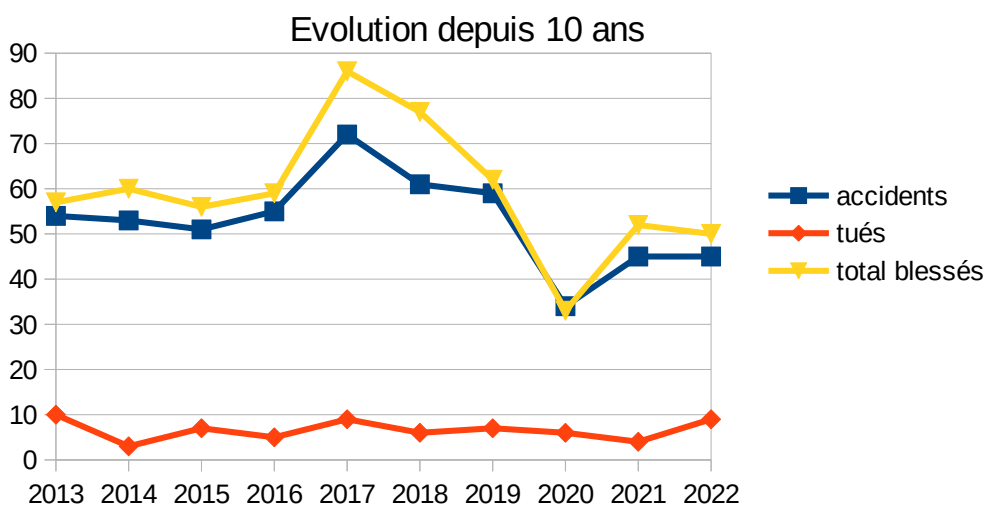
## Sécurité routière

SÉCURITÉ  
ROUTIÈRE **VIVRE,  
ENSEMBLE**

### Les accidents corporels de la circulation année 2022



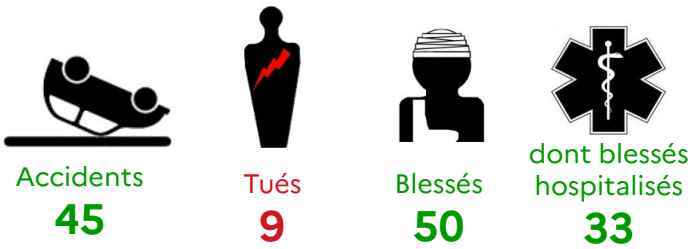
	A	T	B	H
Année 2022	45	9	50	33
zone gendarmerie	38	8	44	31
zone police	7	1	6	2



# Année 2022

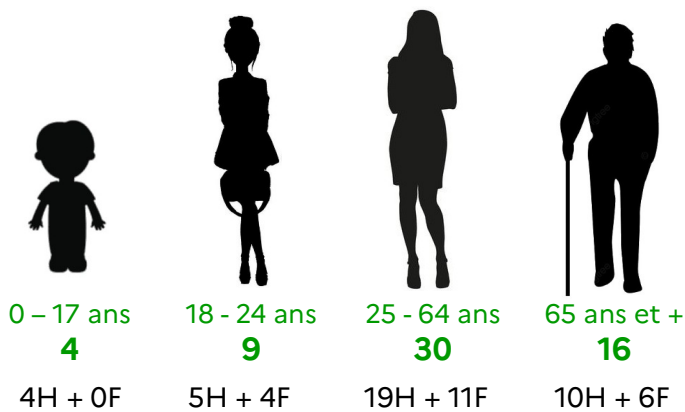
données non consolidées

## Bilan accidentalité

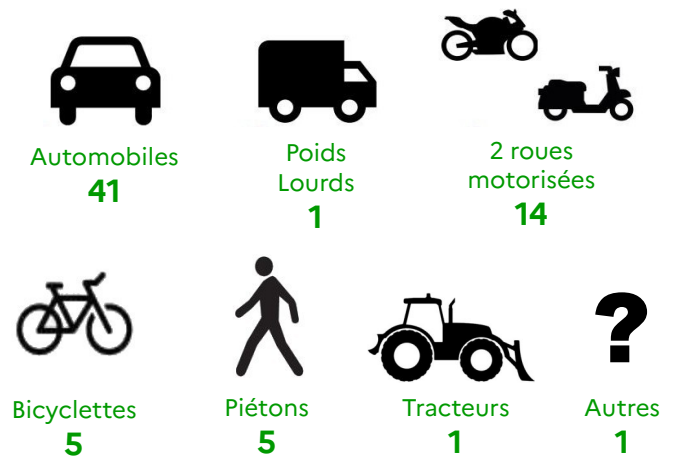


## Tranche d'âges des victimes

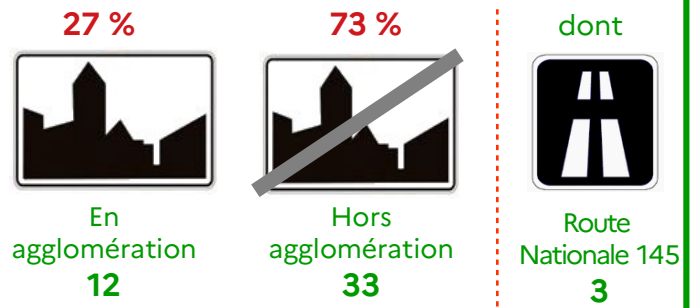
H : hommes – F : femmes



## Mode de déplacement concerné



## Type de réseau routier



## Causes présumées des accidents

